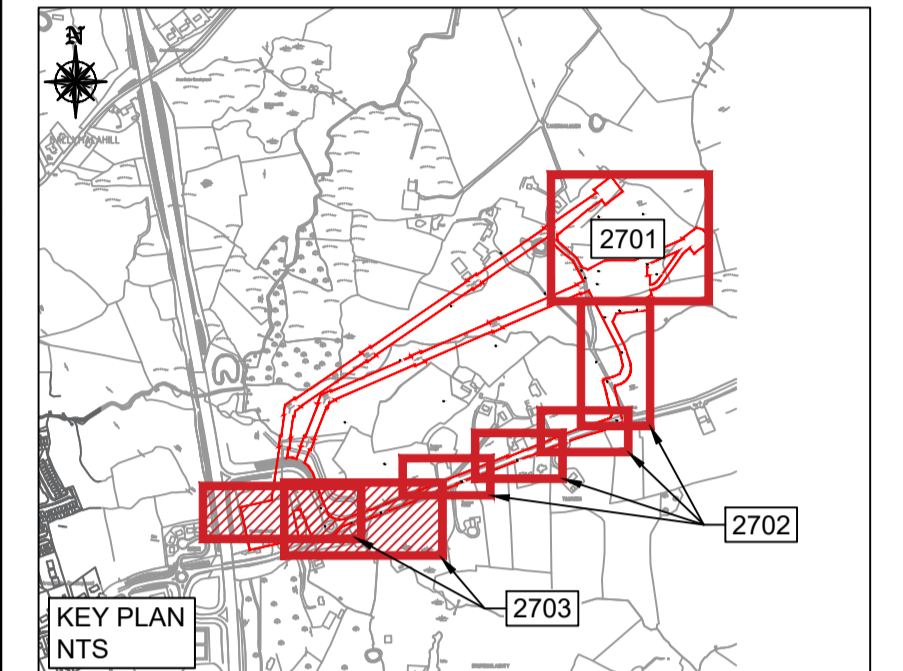
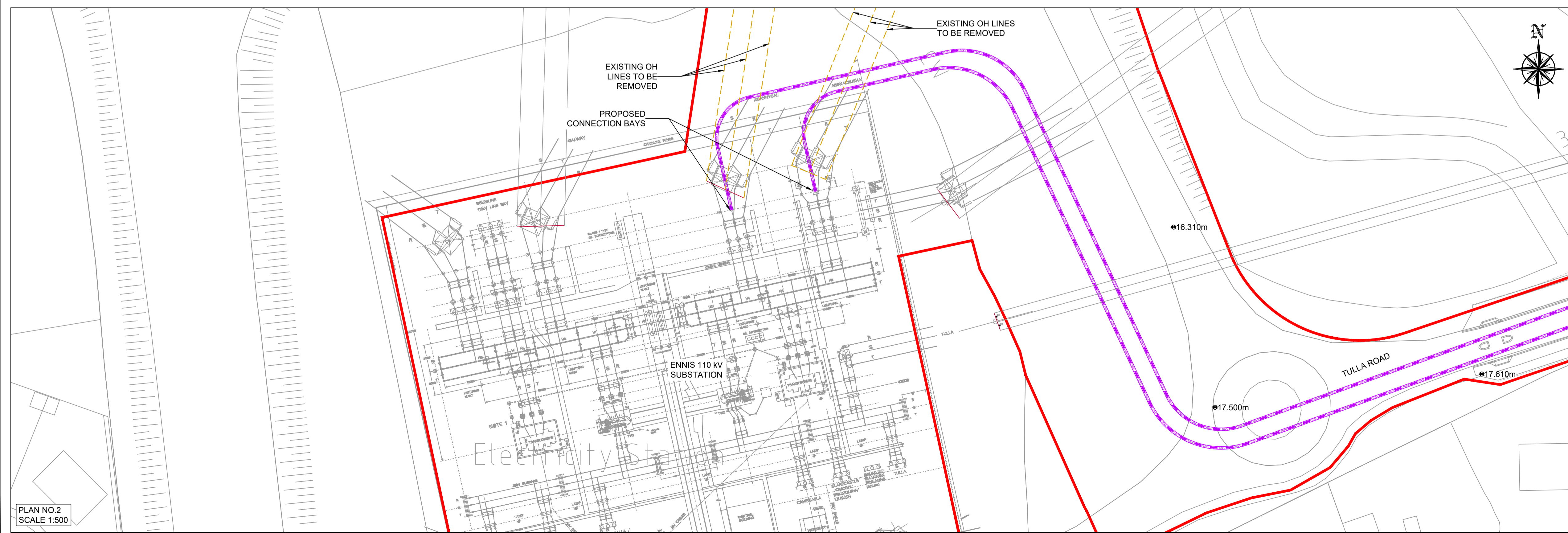
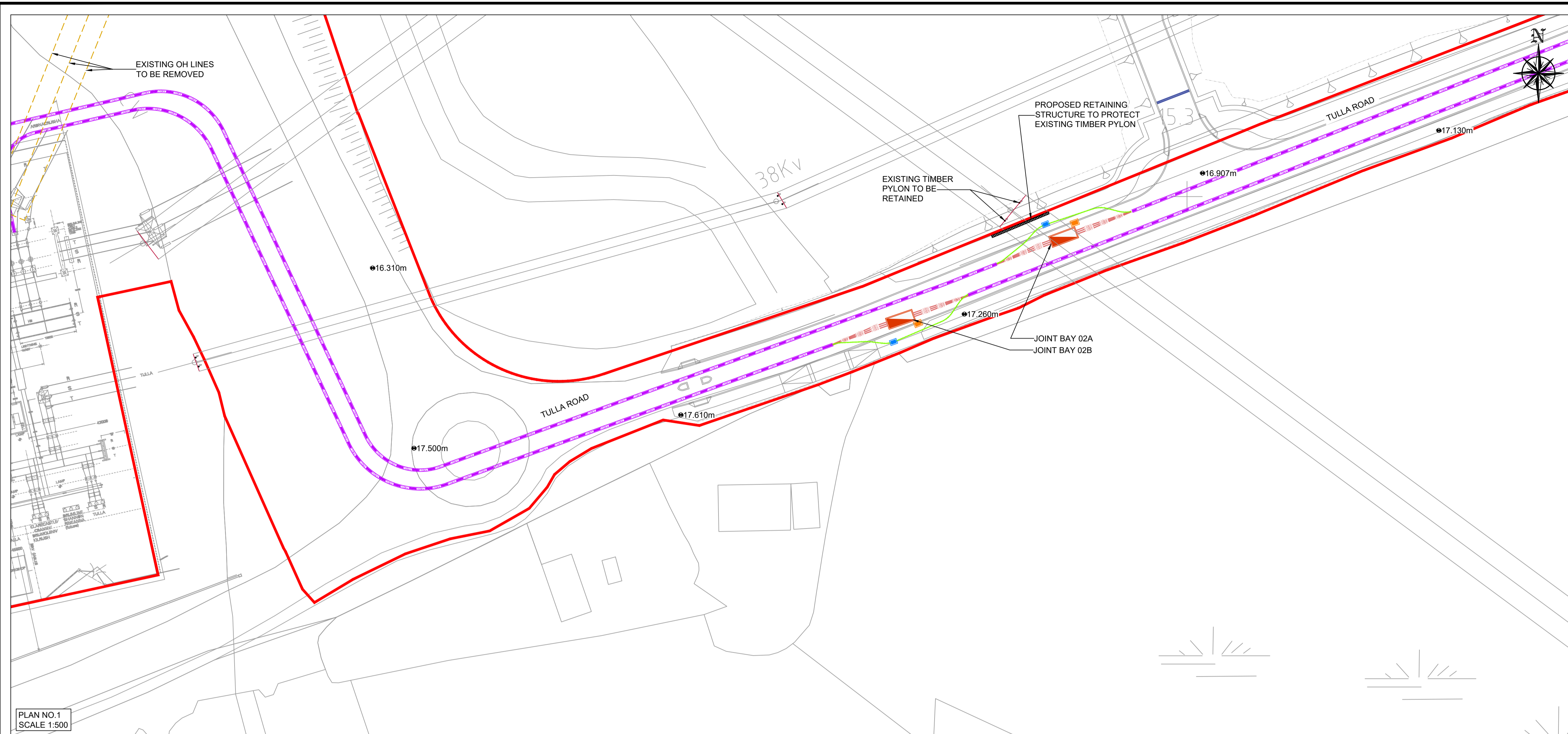


# ART DATA CENTRES



LEGEND:

- SITE BOUNDARY —
- EXISTING OH LINES TO BE REMOVED ---
- PROPOSED 110kV, 2x125mm $\varnothing$  SDR17.6 AND 3x160mm $\varnothing$  SDR21 HDPE DOUBLE CIRCUIT ---
- PROPOSED JOINT BAY LOCATION ▭
- PROPOSED TELECOM DUCT ---
- PROPOSED LINK BOX ▭
- PROPOSED TELECOM CHAMBER ▭
- EXISTING HP GASMAIN ---



Rev	Description	Drawn	Checked	Date
P01	FOR PLANNING	PS	RG	03/06/22

Clifton Scannell Emerson Associates Limited  
Consulting Engineers,  
3rd Floor The Highgate,  
Bakers Point, Pottery Road,  
Dun Laoghaire, Co. Dublin,  
Ireland, A96 KW29

T: +353 1 288 5006  
F: +353 1 283 3466  
E: info@csea.ie  
W: www.csea.ie

Client: ART DATA CENTRES  
Project: ART DATA CENTRES ENNIS CAMPUS - 110KV GIS SUBSTATION  
Dwg. Title: PROPOSED 110 KV GRID CONNECTION SHEET 03 OF 03  
Drawn By: PS Checked By: RG Date: JUN 2022

Project Code	Originator	Zone/Phase	Level	Type	Role	Dwg. No.
20_110A - CSE - GEN - XX - DR - C - 2703						

Status Code	Suitability Description	Scale @ A1
S2	PLANNING	1:500
P01	PLANNING	20_110A